

AN EVALUATION ON LEVEL OF PUBLICNESS OF URBAN PUBLIC SPACES BY USING CORE DIMENSIONS; SPECIFIC REFERENCE TO GALLE FORT (SEA BATH AREA), FOREST (BEACH) PARK AREA, MAHAMODARA MARINE WALK AND OCEAN PATHWAY IN GALLE

K.L.K. THILINI BHAGYA SANDARUWANI¹ & CHAMALI HEWAWASAM²

^{1,2} Department of Town & Country Planning, University of Moratuwa, Moratuwa, Sri Lanka

¹ 162333u@uom.lk, thilinisandharuwani@gmail.com, ² chamalihewawasam@gmail.com

Abstract: In 1990s, the decrement of non-built-up areas due to urbanization directly cause a reduction in the quality of life of the people & the occurrence of social issues in Sri Lanka due to monotonous lifestyles. Therefore, to overcome these issues with a sustainable Sri Lankan vision by 2030 urban beautification projects like urban public spaces, parks concept was introduced to Sri Lanka especially in suburban areas. Recently, the urban recreational spaces concept came to urban fabric with common characteristics that were developed as social spaces for community gathering and interactions with a variety of physical activities. Although with the emerging public space concept, there is no such consideration on research regarding an evaluation on publicness of urban public spaces by using physical dimensions; Specific Reference to Galle Fort (sea bath area), Forest Park area, Mahamodara Marine walk and Ocean Pathway in Galle. Further, there is no proper regulatory framework in public space monitoring & evaluation to improve the infrastructure of public space. The research aim is to evaluate the level of publicness of urban public spaces based on physical dimensions which are owned by public administration in Sri Lanka. Also, it focused to identify what parameters, need to evaluate the level of publicness and understand satisfaction levels of urban public spaces and key indicators, to assess how contributing indicators, influence to achieve the effectiveness of public spaces among users and to provide recommendations based on the experts' and users' views for future improvements of urban public spaces to enhance the publicness level in Sri Lanka. This study was focused on four urban public spaces with the dissimilarity of the availability of design characteristics in Galle. The methodology of the research was comprised of onsite observations, questionnaire surveys, semi-structured interviews, and photographic documentation. The data were quantitatively analysed by using the VIKOR model which is a democratic model to evaluate the publicness level, AHP analysis, and descriptive statistical analysis using SPSS and EXCEL. Qualitative analysis was based on content analysis and photographic documentation. According to the findings of the research, it proved that based on key physical dimensions, criteria, and indicators publicness level, effectiveness, and truly public or not in four case studies. The highest publicness level and satisfaction level occurred in Forest Park which proved the hypothesis of the study. Additionally, by providing more shady areas, proper waste management, proper sitting opportunities, provide proper security system and monitoring system for control spaces, provide diverse activities for all age categories are some of the comments based on respondents which need to be considered in planning & designing urban spaces for increase attraction levels which are benefited for urban planners and designer.

Keywords: *Publicness level; VIKOR model; Effectiveness; Satisfaction level; Qualities of public spaces*

1. Introduction

“Urban public spaces are the places where everyday life of people, routine, ordinary or irregular and unusual activities take place” (Akkar Ercan & Memlük, 2015, pp. 195-221). Many urban design researchers have argued for managing and creating public spaces in urban environment. Increasing privatization is the main reason behind declining publicness of public space.

Due to rapid-urbanization, “commercialization, changing economic structures led to privatization, commodification, changing requirements of the people” etc. are affected to decline publicness (ER, 2019, p. 28). Declining inclusiveness is a prominent reason for declining publicness (Memlük, 2012). Therefore, many researchers debate on its importance related to how public spaces manage too more public. Therefore, re-considering about both managing and designing aspects are essential. Mainly different types of dimensions are used for evaluating publicness in urban public spaces. Based on previous studies, evaluating the publicness is a useful method to identify how much public is a space and it will help to find weaknesses and strengths of public space design in order to find solutions, which can increase accessibility and inclusion of a public space.

Sri Lankan cities have expanded rapidly since 1990s due to urbanization (UN-Habitat State of Sri Lankan cities report, 2017). Urban areas are faced with issues like densify city core areas, stress, compactness, high-traffic-congestion, etc. Therefore, urban public spaces come into Sri Lankan context which promotes recreational activities, removes stressfulness, and emerging as the most important element in urban fabric (UN Habitat, 2017). But Sri Lankan Government forgot the needs of people when creating public spaces as they cater an international audience in Sri Lanka. Therefore, question arises like whether these existing public spaces are truly public or not? Most of the researchers are regarding the determinants of urban public spaces, those impacts for users’ wellbeing, social interaction, etc. But there is no consideration regarding evaluating the publicness in urban public spaces in Sri Lanka when considering physical dimensions. Therefore, it can raise questions like available public spaces to have high publicness value or not? However, evaluating public space characters for publicness and providing recommendations to improve those are essential to provide guidance for urban planners, designers to develop these spaces with appropriate aspects during the rapid urbanization. Therefore, this research paper will achieve that knowledge gap and provide better functioning public spaces for local people in Galle. Under that, this study based on three questions which are; what are the physical dimensions for evaluating the level of publicness of urban public spaces? and what indicators should be improved to increase the utilization/effectiveness of urban public spaces among users? and how far these public spaces are truly public or not? After solving these three questions, this study achieves four objectives which are; to evaluate the level of publicness of urban public spaces based on physical dimensions that are owned by public administration in Sri Lanka, to identify what parameters, need to evaluate the level of publicness and understand satisfaction levels of urban public spaces and key indicators, to assess how contributing indicators, influence to achieve the effectiveness of public spaces among users and to provide recommendations based on the experts’ and users’ views for future improvements of urban public spaces to enhance the publicness level in Sri Lanka.

2. Literature Review and Theories

2.1. PUBLIC SPACE & PUBLICNESS

The grouping of two words ‘public’ and ‘space’ defines a social space, which is normally open to and accessible for all age groups regardless of monetary or social differences. “Madanipour (2010) argued that public spaces should have two broad features that are accessibility and inclusion. In addition, Parkinson (2013) defined public space is freely accessible and democratic space with a provision of opportunities for strangers to meet and interact with each other” (Pourjafar, et al., 2018).

2.2. DIMENSIONS OF PUBLICNESS

The government gives responsibility to create public spaces for private sector, it can miss the publicness level (Langstraat & Melik, 2013). It can raise questions about what publicness exactly indicates. Therefore, scholars presented many interpretations of public spaces. But most researchers analyzed public space by using a descriptive/subjective perspective. There is rarely use a pragmatic approach, needed by many types of experts (planners with decision-making) to understand why certain public places fail and others succeed (Georgiana & Damiano, 2013). Some scholars used models for evaluating publicness, those have limitations. Therefore, a democratic way is needed to evaluate publicness by using different dimensions.

When considering the dimensions of publicness, “Khon(2004) suggested, ownership, accessibility, and inter-subjectivity are core-dimensions. Young(2000) mentioned accessibility, inclusion, and tolerance as core-dimensions. Varna and Tiesdell(2010) described five dimensions as ownership, control, civility, physical configuration, and animation” (Kelleci, 2012). Above-mentioned dimensions based on “multifaceted-interpretation of what publicness includes. Therefore, Florian & Rianne(2013) argued above-mentioned dimensions and they found four dimensions; ownership, management, accessibility, and inclusiveness. These dimensions are more effective than reducing publicness to a single concept”

(Langstraat & Melik, 2013). Fuzzy Inference System used management, access, and user as core-dimensions (Ekdi & Çıracı, 2015). Pourjafar with team used a democratic way to evaluate publicness in public spaces. It calls a VIKOR model categorized as multi-criteria decision-making method. It used management, access, and user as dimensions (Pourjafar, et al., 2018). Volkan(2019) described six morphological dimensions for publicness such as accessibility, permeability, continuity, imageability, complexity, and enclosure.

2.3. MEASURING THE PUBLICNESS

The level of publicness can change because of control elements applied in many public spaces. Those elements make that place more public or more private. Therefore, publicness measurement is important to evaluate level of publicness.

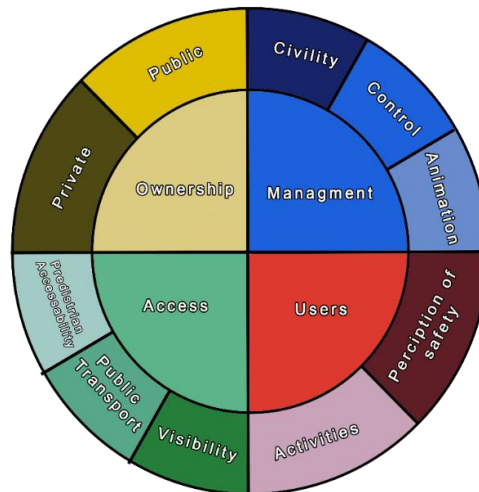


Figure 1. The frequented dimensions and criteria used in the existing literature(Source: (Pourjafar, et al., 2018))

The ownership dimension has a diverse effect on evaluating publicness (Pourjafar, et al., 2018). Management is second dimension and it includes civility, control, and animation criteria which contain number of indicators. "Civility is maintaining and caring for public spaces in which increase attractiveness and welcoming of urban public spaces. Civility includes providing facilities such as physical maintenance, urban-furniture, provision of green space, public toilets, and lightning. Control has a direct relation to urban policies and basic human rights. It has two ways, which includes managing and designing public space. Managing public space contains zero-tolerance policy, using CCTV-cameras, Police force, and security-guards. Animation is in service of basic human needs and its utility is an important part of humans' social life. It identified human needs as comfort, relaxation, passive-engagement, active-engagement, etc. Therefore, providing sitting opportunities, infrastructure, and facilities for cycling and jogging, food vendors, opportunities for active-engagement and frontage are indicators for evaluating animation" (Pourjafar, et al., 2018, p. 3). Access is third dimension and it includes 3 criteria visibility, public transport, and pedestrian accessibility. Visibility is the most important factor to access public spaces from the streets and urban routes. "Designing specify and multiple entrances for a public place make citizens-especially those who are not familiar with area be able to easily access the space" (Pourjafar, et al., 2018, p. 4). It can attract more people. Public transportation is the way of easy access to public spaces according to people's financial capabilities. Therefore, providing appropriate public transportation options can attract more people. The dimension of User is trying to measure perception of safety and varieties of activities in spaces. When providing high-security, people should feel safer and secure. Therefore, more users can attract a variety of leisure activities within that space (Pourjafar, et al., 2018). According to that, Ownership, Management, Access, and User are the main dimensions for evaluating the publicness. This research focuses to evaluate these dimensions by using the VIKOR model.

3. Research Methodology

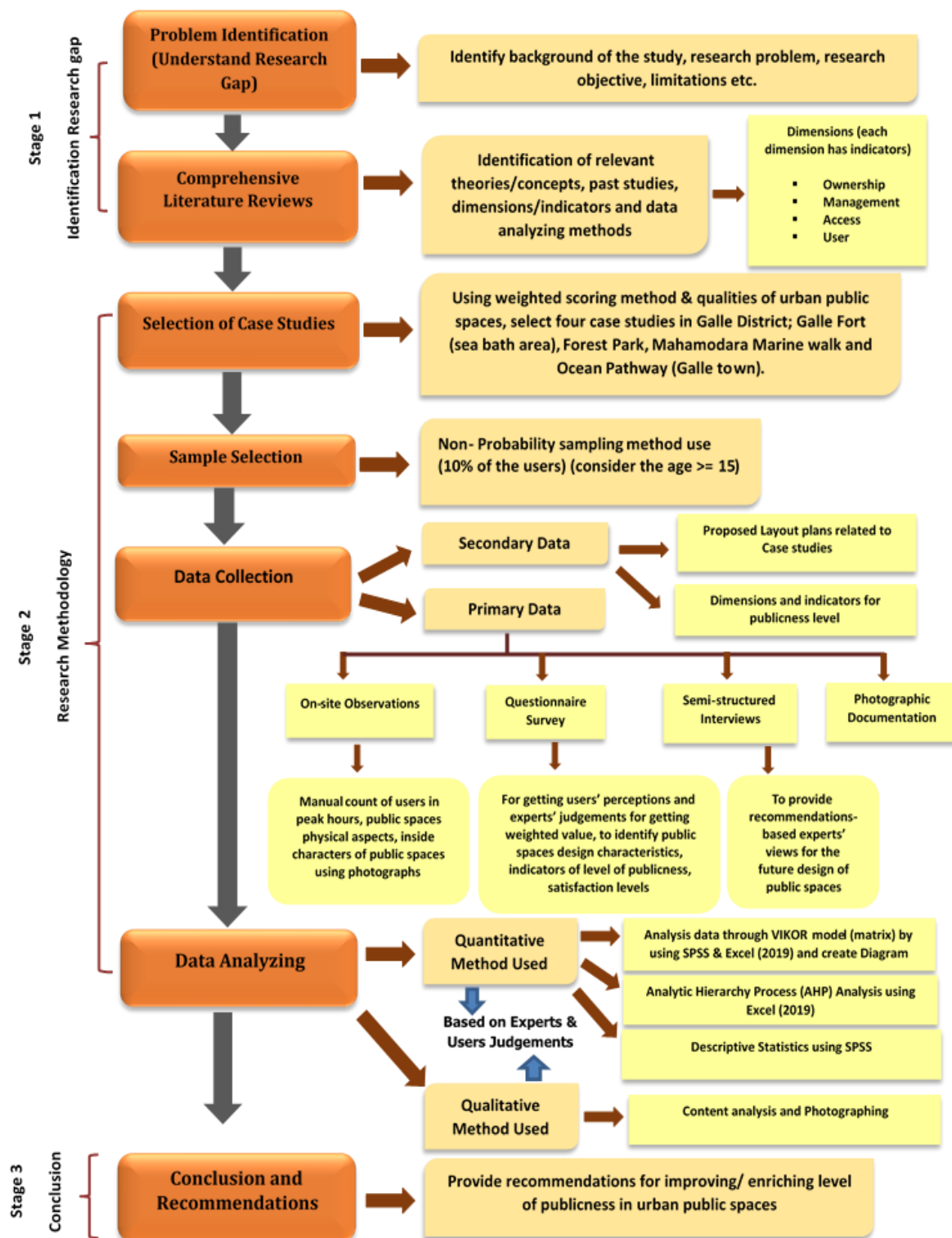


Figure 2. Flow Diagram of Methodology

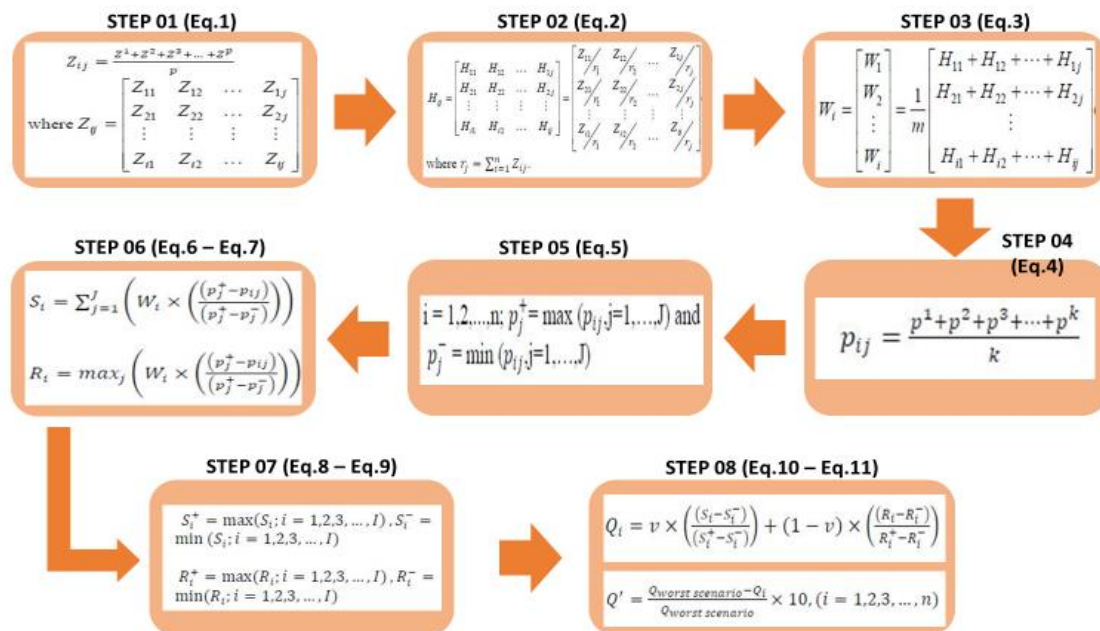
3.1 IDENTIFY SUITABLE MODEL FOR EVALUATION

Firstly, identify suitable model to evaluate the publicness level. When comparing the previous models, they only based on researcher's own observations and views. Those models are no much consideration into role of people, experts' judgments. In practically, weighted indicators of dimensions have not gotten equal importance (Pourjafar, et al., 2018). According to that, finally identify VIKOR model is suitable for

evaluating the publicness level. In order to apply the VIKOR model in practice, and as it is expected to evaluate the publicness level in publicly owned and managed public spaces. Therefore, VIKOR model is a democratic way to evaluate level of publicness. Expert judgment can calculate weighted-values that are much closer to reality. Considering previous models' weaknesses, this model tries to evaluate the publicness based on users' and experts' judgments. This model is more reliable because it is a mathematical, multi-criteria decision-making model and its uses for many studies with different subjects (Büyüközkan & Görener, 2015), (Huang, et al., 2009). It is more suitable for ranking cases. It includes same dimensions, criteria, and indicators which have been used in previous models. It is a kind of summary of previous models. Therefore, the VIKOR model/multi-criteria decision-making tool is the most suitable model for evaluating publicness level of urban public spaces in Sri Lanka (Figure3.1). Appendix 1 mentioned dimensions and indicators, limitations of the models, etc. This study focuses to evaluate publicness by using management, access, and user dimensions considering ownership classification by using a matrix.

Dimension	Criteria	Indicator
A. Management	A1. Civility	A11. physical maintenance and cleaning hard landscape area and urban furniture
		A12. physical maintenance and provision of green space
		A13. physical maintenance and provision of public toilets
		A14. provision of lightening
	A2. Control	A21. CCTV cameras
		A22. Police/private guards
		A23. Sadistic street furniture
		A24. Control signage
	A3. Animation	A31. Sitting opportunities
		A32. Infrastructure and facilities for cycling and jogging
		A33. Food/street vendors
		A34. Active engagement and Discovery
A35. Active frontage		
B. Access	B1. Visibility	B11. Visibility of site
	B2. Public Transport	B21. Bus Stops, Metro Stations
	B3. Pedestrian accessibility	B31. Pedestrian Walkways and Cycling routes
C. Users	C1. Perception of Safety	C11. Feeling Safe and Secure
	C2. Activities	C21. Variety of Activities

Figure 3. VIKOR Model Dimensions, Criteria and Indicators
(Source: (Pourjafar, et al., 2018))



STEP 01	Calculating the average of all experts' judgments. Each expert assessment forms an initial matrix Z_p that is $n \times n$ matrix obtained by pair-wise comparisons in terms of importance between indicators by using five-scale ranging represented as: no importance (1), very low importance (3), low importance (5), High Importance (7) and very high importance (9). For p experts the average Z_{ij} of all experts' evaluations can be calculated by using Eq.1.
STEP 02	Normalizing the average of all experts' judgment. For acquiring normalized matrix (H_{ij}) , each element of matrix Z_{ij} divided by the sum of its column (N). Therefore, sum of each column equals 1.
STEP 03	Obtaining weights of each indicator. Weights for each indicator can be acquired by calculating Eigen vector. Eigen vector can obtain by averaging across the rows of matrix H_{ij} through using Eq. 3. In Eq. 3 m value is the number of indicators and matrix W_i has one column and m rows.
STEP 04	Calculating the average of all users' scores. Score of each indicator will be the average of all users' assessments. For obtaining the average of k users scores, Eq. 4 is used as same as Eq. 1. Matrix p_{ij} is calculated based on dividing sum of p^k with the number of users.
STEP 05	Define the more public p_j^+ and the more private p_j^- values of all indicators function. The top and the bottom of scores can be calculated by using follow equation.
STEP 06	Compute the values S_i and R_i . These two parameters also known as weighted and normalized Manhattan distance (S_i) and weighted and normalized Chebyshev distance (R_i) which are calculated by using Eqs. 6-7.
STEP 07	Finding the final value (Q_i). Before calculating the last value for each case study, computing four parameters are necessary to obtain Q_i value. These parameters include S_i^+ , S_i^- , R_i^+ and R_i^- , which computes by using follow equations.
STEP 08	After that, the final value of Q_i can be computed by the equation number 10. Rank the case studies. The result should be sorted by the Values of S , R and Q for each case study and from the minimum value. The lowest value of Q represents a public place close to more public and the biggest one shows the closeness to more private. Furthermore, for better interpreting ranking system based on Q value of each case study equation 11 employed to calculating the level of publicness (Q') in scale of 0 to 10, which zero represents fully private and 10 shows fully public.

Figure 4. Eight steps of VIKOR Model
(Source: (Pourjafar, et al., 2018))

3.2. SELECTION OF SAMPLE SIZE



Figure 5. Location map of selected case studies in Galle

This study focuses on four locations in Galle. The case studies were selected based on on-site observations and secondary sources (using public space quality index criteria). The selected four case-

studies are; Galle Fort (Sea Bath), Forest Park, Mahamodara Marine-walk, and Ocean Pathway in Galle MC. Below map shows those locations. The sampling method used in the study can be interpreted as the non-Probability sampling method. It selects mainly because the study is based on users of particular selected public spaces. The related studies use this sampling method, which is selected based on nature of research process. Within Non-probability sampling, the convenience-sampling selects to carry-out an oral-interview questionnaire survey, and purposive sampling uses in the qualitative study which is a semi-structured interview. The sample size is determined as user-count through observation which is a total of peak-hour observation in a day. An average value is taken based on the observation and 10% of users selected from each public space due to time limitations and Covid-19 pandemic situation. The sample includes the age level >=15 because low-level of age category will make disruption in data collecting time. So, the collected information may not have reliability/validity. Accordingly, it can obtain approximately 200 questionnaires. 9 experts include semi-structured interviews.

4. Analysis & Findings

4.1 Q1- WHAT ARE THE PHYSICAL DIMENSIONS FOR EVALUATING THE LEVEL OF PUBLICNESS OF URBAN PUBLIC SPACES?

4.1.1. Stage 1- Assess the importance of contributing indicators to evaluate the publicness level of public spaces

After choose model, assesses the importance of contributing indicators. The contributing indicators identified through literature review. These indicators assess in four case-studies to study publicness level. Experts’ judgments are taken into concern for calculating the importance of contributing indicators in planning/designing, and construction of public spaces. According to that, all weights of each indicator identify through nine expert judgments. Through equation(1-3), indicators’ weights are calculated (Figure 6). The highest importance has “sadistic street furniture, visibility of the site, and feeling safe and secure” indicators as scored 0.09. The second importance has “public transport like bus stops, metro station” etc. as scored 0.08. “Control signage” has the least importance compared to others and it scored 0.02. According to that, ‘management and control’ have the highest weights among all dimensions and indicators.

																		Number of indicators = 18			
Dimension	Management A.												Access B.			Users C.		Sum	Weights	Rank of Indicators	
	A1.				A2.				A3.				B1.	B2.	B3.	C1.	C2.				
Criteria	A11.	A12.	A13.	A14.	A21.	A22.	A23.	A24.	A31.	A32.	A33.	A34.	A35.	B11.	B21.	B31.	C11.	C21.			
A11	0.02	0.02	0.04	0.02	0.05	0.04	0.01	0.02	0.03	0.03	0.05	0.04	0.03	0.05	0.04	0.01	0.06	0.04	0.60	0.03	7
A12	0.05	0.02	0.06	0.07	0.04	0.03	0.07	0.06	0.04	0.04	0.06	0.05	0.02	0.07	0.09	0.05	0.07	0.02	0.89	0.05	5
A13	0.03	0.02	0.01	0.03	0.07	0.06	0.09	0.04	0.04	0.04	0.06	0.05	0.04	0.02	0.12	0.03	0.04	0.02	0.80	0.04	6
A14	0.07	0.03	0.03	0.02	0.06	0.05	0.08	0.05	0.07	0.03	0.07	0.07	0.03	0.03	0.09	0.00	0.04	0.01	0.82	0.05	5
A21	0.06	0.07	0.07	0.07	0.03	0.05	0.05	0.07	0.13	0.07	0.10	0.08	0.07	0.06	0.05	0.10	0.07	0.12	1.30	0.07	3
A22	0.06	0.07	0.07	0.06	0.08	0.03	0.07	0.05	0.11	0.07	0.07	0.07	0.06	0.07	0.02	0.09	0.05	0.09	1.18	0.07	3
A23	0.09	0.08	0.09	0.08	0.12	0.10	0.05	0.09	0.05	0.10	0.06	0.08	0.08	0.12	0.07	0.09	0.05	0.10	1.53	0.09	1
A24	0.02	0.02	0.02	0.01	0.03	0.03	0.01	0.01	0.01	0.00	0.01	0.00	0.01	0.01	0.07	0.04	0.04	0.02	0.37	0.02	8
A31	0.05	0.04	0.04	0.04	0.01	0.04	0.08	0.08	0.03	0.04	0.07	0.08	0.08	0.07	0.07	0.06	0.08	0.06	1.02	0.06	4
A32	0.06	0.05	0.05	0.06	0.04	0.04	0.01	0.07	0.05	0.02	0.07	0.03	0.07	0.03	0.04	0.04	0.08	0.03	0.86	0.05	5
A33	0.02	0.03	0.02	0.01	0.00	0.03	0.05	0.05	0.05	0.02	0.01	0.00	0.01	0.01	0.01	0.02	0.07	0.06	0.48	0.03	7
A34	0.05	0.04	0.05	0.02	0.02	0.03	0.01	0.06	0.01	0.05	0.05	0.02	0.04	0.01	0.02	0.01	0.04	0.04	0.57	0.03	7
A35	0.05	0.06	0.06	0.06	0.03	0.06	0.01	0.04	0.01	0.02	0.04	0.03	0.02	0.03	0.02	0.03	0.01	0.01	0.58	0.03	7
B11	0.08	0.12	0.10	0.12	0.15	0.07	0.04	0.07	0.11	0.11	0.08	0.09	0.08	0.04	0.06	0.09	0.08	0.09	1.57	0.09	1
B21	0.07	0.06	0.05	0.08	0.09	0.16	0.11	0.06	0.08	0.09	0.08	0.10	0.10	0.13	0.03	0.12	0.03	0.08	1.53	0.08	2
B31	0.07	0.07	0.07	0.10	0.05	0.04	0.05	0.05	0.03	0.05	0.04	0.07	0.06	0.04	0.03	0.02	0.04	0.05	0.95	0.05	5
C11	0.08	0.09	0.08	0.07	0.08	0.11	0.13	0.06	0.07	0.12	0.06	0.09	0.11	0.14	0.09	0.13	0.04	0.11	1.66	0.09	1
C21	0.09	0.09	0.08	0.08	0.04	0.04	0.04	0.06	0.08	0.10	0.04	0.07	0.09	0.09	0.08	0.07	0.12	0.03	1.27	0.07	3

Figure 6. Weighted values of dimensions, criteria, and indicators through Experts' Judgements

4.1.1.1 Satisfaction level of contributing indicators for evaluating publicness level

When considering the satisfaction level of each indicator, most experts agree with these physical dimensions for evaluating the publicness level. Sitting opportunities, quality of pedestrian walkways, cycling routes, and feel safe and secure indicators have high satisfaction-level above 85% among experts’

views. The satisfaction level always links with publicness level. Because the contributing factors satisfaction mainly leads to decide the publicness level. When considering the User perception most user are satisfied model indicators. Some of them are not satisfied in CCTV indicator because they thought it is the disturbing element of their freedom.

4.1.2. Stage 2- Assess the performance of each indicator according to four case studies

At this stage, mainly evaluate each indicator’s performance according to each case-study. It gives an idea about publicness level in each case-study through questionnaire survey among users.

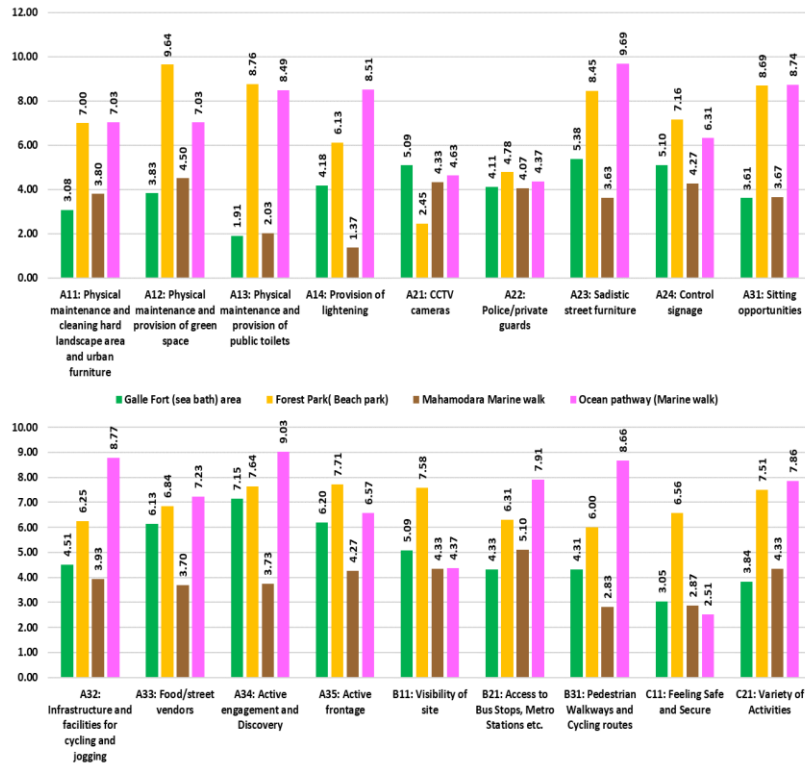


Figure 7. Average values of all users' judgements based on indicators in four case studies

indicator get high score of 9.64. According to observations, this space provides more benches under huge trees.

30 users are respondent survey in Mahomodara Marine-walk. Lots of 15-25 age group people are using this space according to observations. Most of them are couples. According to survey, “provision of lightening” indicator gets the lowest score as 1.37. Because this space is not maintaining and all lights are broken.

User said that “At night time, we cannot use this space because it looks darker nature, therefore some illegal activities are happening. It scares us to come here at night”. During experts’ interview, one expert said that “some people are broken lights and they create this space as small spot for their illegal activities”.

The highest score relates to “access to bus stops, metro stations, etc.” indicator because bus stops are locating near this space. Therefore, people can easily access this space.

The ocean pathway, 35 users are respondents to survey. “Feeling safe and secure” indicator gets the lowest score as 2.51. Because there are unstable huts which are created by fishermen. Those houses take on an ugly nature to this space. “No sadistic street urban furniture” indicator gets the highest score as 9.69. Because this space is well maintaining. Also, people can easily access this space because it is located near Galle town. This space is more suitable for jogging, watching, sitting, eating, and taking photographs. Therefore, this space is more functioning in town area.

In Galle Fort(Sea Bath), 80 users are respondents to survey. According to that, the lowest score record to “physical maintenance and provision of public toilets” indicator as scored 1.91. “Active engagement and discovery” indicator obtain a high score as 7.15. Because Galle Fort is the one of world heritage and it has beautiful scenery and provides various types of activities for people.

55 respondents participated survey in Forest Park. The lowest score relates to “perception about CCTV cameras” indicator. Users’ concern CCTV element is a disturbing element for their freedom. “Physical maintenance and provision of green space”

4.1.3. Stage 3- Calculate the level of publicness in four case studies

This stage mainly focuses to calculate the publicness level based on VIKOR model in four case studies. It mainly considers the average values of all users' judgments of indicators. It decides publicness level in each case study. Because users are the people who are using these spaces as usual. Under the VIKOR model, the Q value should be arranged in descending order and decide on what case study has high-level and what case study has low-level publicness. Therefore, the Q' value concerns rank case studies. Equation 10 and 11 use for evaluating the publicness level. Furthermore, publicness level has scale of 0 to 10 values. 0 represents the worst publicness level (fully private) and 10 represents the best publicness level (fully public). Based on VIKOR model analysis, Forest Park has high publicness level as scored 5.04. Mahamodara Marine Walk has the lowest level of publicness as scored 2.63. According to ranking, 1. Forest Park, 2. Ocean Pathway, 3. Galle Fort and 4. Mahamodara Marine-walk.

According to ownership classification, all case studies have public-ownership, public-function, and public-use.

Ownership Classification according Literature	Galle Fort(Sea bath) area	Forest (beach) Park	Mahamodara Marine Walk	Ocean Pathway (Marine Walk -Galle)
Public ownership/ Public function/ Public use	* (Galle Municipal Council)	* (Galle Municipal Council)	* (Coastal Conservation Department)	* (Galle Municipal Council)
Public ownership/ Public function/ Administrative use				
Public ownership/ Public function/ Private use				
Private ownership/ Public function/ Public use				
Private ownership/ Private function/ Public use				
Private ownership/ Private use				

Table 1. Ownership classification of case studies



Figure 8. Publicness Level of four case studies

Indicators	Weight	More Private	Based on average score of all citizens judgments				More Public	f*	f^	Si						Publicness Level					
			Case 1	Case 2	Case 3	Case 4				More Private	Case 1	Case 2	Case 3	Case 4	More Public	More Private	Case 1	Case 2	Case 3	Case 4	More Public
A11	0.03	1	3.08	7.00	3.80	7.03	10	10	1	0.033	0.026	0.011	0.023	0.011	0	Ri	Ri	Ri	Ri	Ri	Ri
A12	0.05	1	3.83	9.64	4.50	7.03	10	10	1	0.049	0.034	0.002	0.030	0.016	0	0.09	0.07	0.06	0.07	0.08	0.00
A13	0.04	1	1.91	8.76	2.03	8.49	10	10	1	0.045	0.040	0.006	0.040	0.008	0	St	St	St	St	St	St
A14	0.05	1	4.18	6.13	1.37	8.51	10	10	1	0.045	0.029	0.020	0.044	0.007	0	1.00	0.63	0.34	0.69	0.35	0.00
A21	0.07	1	5.09	2.45	4.33	4.63	10	10	1	0.072	0.040	0.061	0.046	0.043	0	S-	S-	S-	S-	S-	S-
A22	0.07	1	4.11	4.78	4.07	4.37	10	10	1	0.066	0.043	0.038	0.043	0.041	0	0.00	0.00	0.00	0.00	0.00	0.00
A23	0.09	1	5.38	8.45	3.63	9.69	10	10	1	0.085	0.044	0.015	0.060	0.003	0	S+	S+	S+	S+	S+	S+
A24	0.02	1	5.10	7.16	4.27	6.31	10	10	1	0.021	0.011	0.007	0.013	0.008	0	1.00	1.00	1.00	1.00	1.00	1.00
A31	0.06	1	3.61	8.69	3.67	8.74	10	10	1	0.057	0.040	0.008	0.040	0.008	0	R+	R+	R+	R+	R+	R+
A32	0.05	1	4.51	6.25	3.93	8.77	10	10	1	0.048	0.029	0.020	0.032	0.007	0	0.09	0.09	0.09	0.09	0.09	0.09
A33	0.03	1	6.13	6.84	3.70	7.23	10	10	1	0.027	0.012	0.009	0.019	0.008	0	R-	R-	R-	R-	R-	R-
A34	0.03	1	7.15	6.25	3.73	9.03	10	10	1	0.032	0.010	0.013	0.022	0.003	0	0.00	0.00	0.00	0.00	0.00	0.00
A35	0.03	1	6.20	7.64	4.27	6.57	10	10	1	0.032	0.014	0.008	0.021	0.012	0	Q	Q	Q	Q	Q	Q
B11	0.09	1	5.09	7.71	4.33	4.37	10	10	1	0.087	0.048	0.022	0.055	0.055	0	1.00	0.69	0.50	0.74	0.59	0.00
B21	0.08	1	4.33	7.58	5.10	7.91	10	10	1	0.085	0.053	0.023	0.046	0.020	0	Q'	Q'	Q'	Q'	Q'	Q'
B31	0.05	1	4.31	6.00	2.83	8.66	10	10	1	0.053	0.033	0.023	0.042	0.008	0	0.00	3.06	5.04	2.63	4.14	10.00
C11	0.09	1	3.05	6.56	2.87	2.51	10	10	1	0.092	0.071	0.035	0.073	0.077	0	Rank	3	1	4	2	Rank
C21	0.07	1	3.84	7.51	4.33	7.86	10	10	1	0.071	0.048	0.020	0.044	0.017	0						

Figure 9. Evaluating the publicness level based on four case studies

When comparing overall satisfaction level and publicness level among four case studies, Forest Park has high score. Accordingly, people like to live and spend time like these spaces.

Satisfaction Level	Galle Fort(Sea bath) area		Forest (beach) Park		Mahamodara Marine Walk		Ocean Pathway (Marine Walk -Galle)	
	Frequency	Percentage	Frequency	Percentage	Frequency	Percentage	Frequency	Percentage
Very satisfied	34.0	42.5	44.0	80.0	N/A	N/A	21.0	60.0
Satisfied	28.0	35.0	6.0	10.9	5.0	16.7	9.0	25.7
Neutral	8.0	10.0	5.0	9.1	8.0	26.7	4.0	11.4
Dissatisfied	8.0	10.0	N/A	N/A	14.0	46.7	1.0	2.9
Very Dissatisfied	2	3	N/A	N/A	3	10	N/A	N/A

Figure 10. Overall Satisfaction level of four case studies

4.2. Q2 - WHAT INDICATORS SHOULD BE IMPROVED TO INCREASE THE UTILIZATION/EFFECTIVENESS OF URBAN PUBLIC SPACES AMONG USERS?

Objectives 2 and 3 can achieve when solving research questions 2 and 3.

4.2.1. Indicators improve the effectiveness

The experts' views generated through semi-structured interviews and oral-interview questionnaire surveys used to identify indicators should be improved to increase the utilization of public spaces. According to the experts' point of view, there are several indicators identified to improve/increase utilization. According to those views, a good operating system needs to control these spaces. Then, it can improve high publicness level of public spaces.

4.2.1. Users' perception towards enhancing the publicness level and effectiveness of public spaces

This section elaborates on comments provided by users regarding enhancing the publicness level and improving utilization of public spaces. These two studies will be beneficial to upgrade the effective utilization of these public spaces' infrastructures and to increase publicness level in the future.

According to user perception, they provided several comments on improving utilization and increasing publicness level. Maintain and cleanliness inside the public spaces and furniture, awareness programs through visual interpretations to aware public about the importance of infrastructures usage, provide feel safe, secure and high accessible space for all, provide high-quality pedestrian walkways, cycling routes and sitting facilities for all age groups, provide lights for dark hours to increase effectiveness of space and control signages visible to all users and newcomers to city which is easily understandable and attractive way are some of the comments according to users' view.

4.2.3. Experts' and Users' views of barriers & reason for underutilization

There are reasons for underutilization and barriers to development of public spaces which have been identified by users as well as through experts. Initially, the reasons for underutilization are explained, and elaborate on the barriers to development of public spaces.

Before the construction, eligibility assessment and feasibility studies are carried out. However, after the construction, no monitoring studies to show the progress of the particular construction. This is identified as main reason for underutilization. According to their views, it will be beneficial to identify problems that arise after the construction and upgrade their process in upcoming works. Other reasons for underutilization are no proper operationalize system, no maintenance, not provided accessibility for disabled people, not located in strategic location, no public awareness, no proper security system, presence of beggars, drug dealers, fear of being assaulted in spaces discourage the users not to use. The main barriers

to the development of public spaces in Sri Lanka are identified by experts as cost and fund. However, cost is high and lack of funds is always paving a way to go for an option. It also leads to underutilization. Also, some regulations affect to stop some developments in these spaces.

3. Conclusions and Discussions

The findings are explored by addressing each research question of the study. Subsequently, the results which answer the question one identifies by comparing four cases, publicness level, and overall satisfaction-level are highly recorded in Forest Park. VIKOR model is the most suitable and efficient model for evaluating publicness level based on Experts' and Users' judgments. It is more applicable and visualizing model for Sri Lankan context. Publicness indicators assess based on users' judgments. Because citizens are daily users and it will get reliable answers for this study. Therefore, there are gaps between experts' and users' views. The comparison between contributing indicators for effectiveness indicated that physical infrastructures and maintenance as the most influencing indicators. The satisfaction level explored that the users are highly satisfied with the "physical maintenance and no sadistic urban furniture" while dissatisfied with the "CCTV camera" indicators. Experts are highly satisfied with the "sitting opportunities and feel safe/secure" indicators. However, many experts' views are the effective utilization of these spaces infrastructures depends on attitude and behavioral pattern of users. These findings prove the elements that are included in Urban Design Theory are important to those spaces. Also, this study talks about what indicators should be improved, what are reasons for underutilizing of public spaces, and users' perception about key indicators. Finally, it assesses those who are truly public or not. According to user judgment, Galle Fort, Forest Park, and Ocean Pathway are truly public. But Mahamodara Marine Walk is not public based on user views. Because it is not maintaining, no lighting and it feels unsafe and insecure space.

According to ownership classification, those are fully-public because those have public-ownership, public-function, and public-use. Only managing and control are two different things among case studies. Furthermore, this study is more reliable because experts' judgment decreases the self-errors and gets true answer than assessing users. To recap, this study tried to clear documentation for assessing by people and fulfill gaps of previous models, which made final result closer to reality. Finally, users' judgment is used VIKOR model for getting final results and illustrating that assessment. Therefore, this model is an efficient model to evaluate the publicness level, and urban planners/designers can analyze urban issues easily. The study findings are focused on evaluating publicness level that achieves social and physical sustainability of spaces which makes benefit for urban planners/designers & decision-makers who are working in built-environment within the community as well spaces are created for community gathering purpose in Sri Lanka is proved under these result interpretations.

6. References

- Akkar Ercan, M. & Memlük, N., 2015. More inclusive than before?:The tale of a historic urban park in Ankara, Turkey. *Urban Design International*, pp. 195-221.
- Anon., 2015. *CEPA Report*, s.l.: SLRC.
- Büyüközkan, G. & Görener, A., 2015. Evaluation of product development partners using an integrated AHP-VIKOR model. *Kybernetes [Cybernetes]*, p. 44 (In Czech).
- Ekdi, F. P. & Çıracı, H., 2015. Really public? Evaluating the publicness of public spaces in Istanbul by means of fuzzy logic modelling. *Journal of Urban Design*, pp. 1-20.
- ER, V., 2019. Investigating the Morphological aspects of public spaces: The case of Atakum Coastal Promenade in Samsun. *Urban Design in city and Regional Planning*, pp. 1-257.
- Georgiana, V. & Damiano, C., 2013. Making the publicness of public spaces visible: from Space Syntax to the Star Model of Public Space. *EAEA-11 conference*, pp. 1-16.
- Huang, J., Tzeng, G. & Liu, H., 2009. A Revised VIKOR Model for Multiple Criteria Decision Making - The Perspective of Regret Theory. *Cutting-Edge Research Topics on MCDM*, p. 35.
- Kelleci, S., 2012. Investigating the publicness of Administrative Spaces and a case study in Bakanliklar [Ministries] District: Ankara. *Middle East Technical University*, pp. 1-162 (In Turkish).
- Langstraat, F. & Melik, R. V., 2013. Challenging the 'End of Public Space': A Comparative Analysis of Publicness in British and Dutch Urban Spaces. *Journal of Urban Design*, pp. 1-21.
- Memlük, N. O., 2012. Inclusivity of public space: Changing Inclusivity of an urban park, Gençlik Parkı [Youth Park], Ankara. *Middle East Technical University*, pp. 1-189 (In Turkish).
- Pourjafar, M. R., Zangir, M. S., Moghadam, S. N. M. & Farhani, R., 2018. Is there any room for public? Democratic evaluation of publicness of public places. *Journal of Urban and Environmental Engineering*, pp. 1-14.
- UDA District Office, G., 2019. *Development plan for Greater Galle Area 2019-2030*, Galle: s.n.
- UN Habitat, 2017. *The States of Sri Lankan Cities*, s.l.: s.n.

Varna, G. & Tiesdell, S., 2010. Assessing the Publicness of Public Space: The Star Model of Publicness. *Journal of Urban Design*, pp. 1-24.